





## *Selection of East End Artists*



*At The Chequit Inn*  
9 Washington Street,  
Shelter Island Heights, New York  
Open Daily 9am to 5pm Thru Labor Day

A·R·C  
FINE ART LLC



ANDREW BLAUSCHILD

*Ditch*, 2013

Silver gelatin type LE/Selenium print

30.3 x 45 in. | Edition of 6

\$5,800 unframed



CHRISTINE MATTHAI

*Mashomack Light*, 2014

C-print mounted on plexiglass

35 x 50 in. | Edition of 10

\$6,500



ROSS BLECKNER  
*Happiness for Instance II*, 1997  
17-color silkscreen  
42 x 32 in. | Edition of 75  
\$4,000 unframed

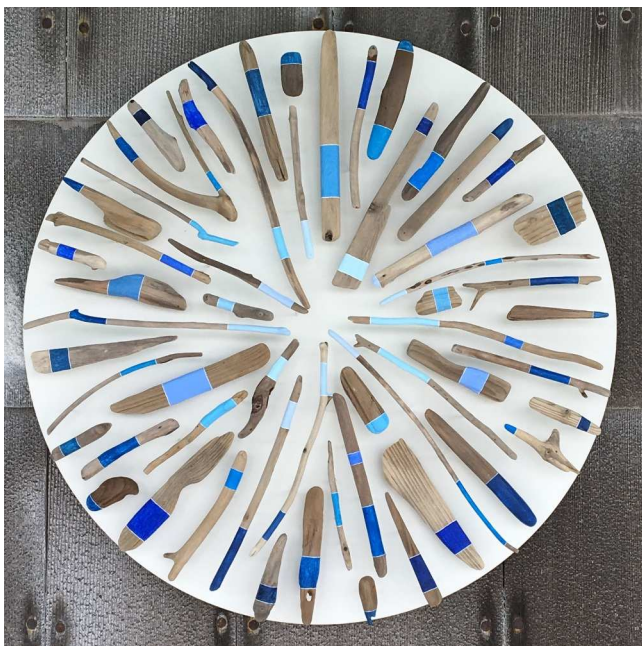


ROSS BLECKNER  
*Happiness for Instance III*, 1997  
17-color silkscreen  
42 x 32 in. | Edition of 75  
\$4,000 unframed



KATHRYN LYNCH  
*Untitled 4, 3, 6, 5, 2016*  
 Oil on panel, each  
 10 x 10 in. each  
 \$3,000 each





JANE PARKES  
*From Within*, 2018  
Found drift wood and paint  
20 in. diameter  
\$3,200 (on hold)







PERRY BURNS  
*3rd Eye Bullseye*, 2015  
Oil on canvas  
36 x 36 in.  
\$6,000





PERRY BURNS  
*Wild Rose Target*  
Oil on canvas  
36 x 36 in.  
\$6,000



DONALD SULTAN

*Red Poppies, 2012*

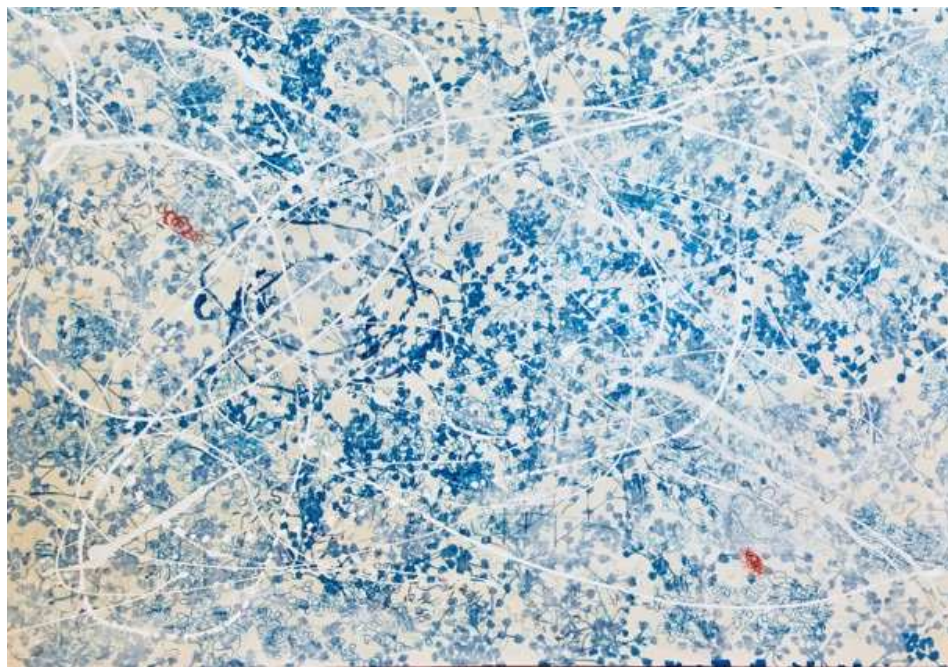
Silkscreen in 8 colors and flocking

19 × 20 in. | Edition of 80

\$4,000 plus \$300 frame



DONALD SULTAN  
*Yellow Poppies* Sept. 12, 2013, 2013  
Silkscreen in 8 colors and flocking  
19 × 20 in | Edition of 80  
\$3,000 unframed



BASTIENNE SCHMIDT

*Topos*

Mixed media on canvas

48 x 72 in.

\$15,000





BASTIENNE SCHMIDT  
*Blue Water Horizon with String*  
Mixed media on raw canvas with string  
36 x 36 in.  
\$7,500



JONI STERNBACH  
*Chris + Dan, 2010*  
Archival pigment print  
20 x 24 in.  
\$2,200 + \$250 frame



JONI STERNBACH  
*3 Surfers Morro Rock, 2013*  
Gelatin Silver Print mounted on museum board  
16 x 20 in.  
\$2,000 + \$200 frame



IDOLINE DUKE

*Big Summer Orange*, 2018

Watercolor / india ink

30 × 30 in

\$2,800



IDOLINE DUKE

*Big Green Flower II*, 2013

Watercolor on paper

36 x 36 in.

\$3,600



IDOLINE DUKE  
*Evening Lines Summer 16, 2016*  
Watercolor on paper  
30 x 40 in.  
\$3,200 plus \$500 frame





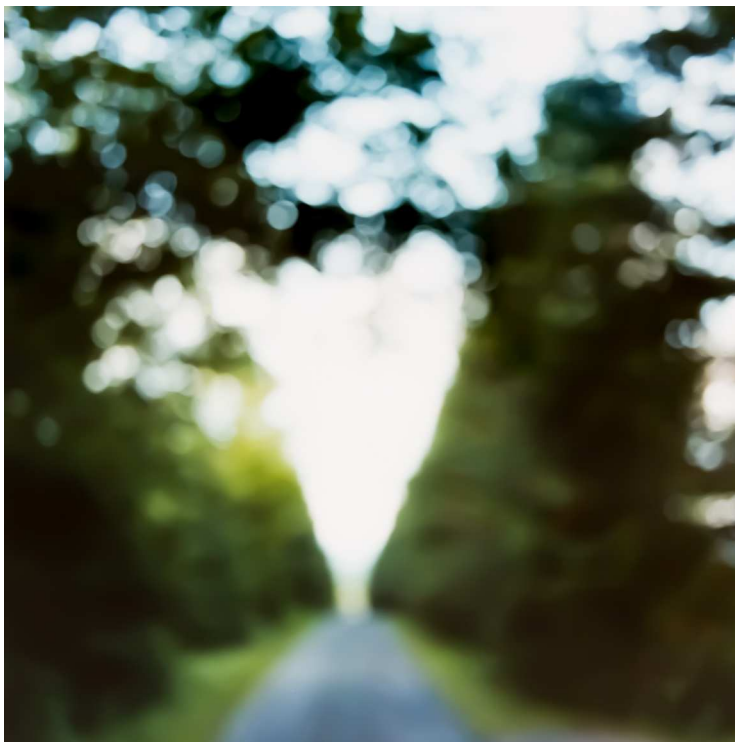
IDOLINE DUKE

*Beachcomber's Valentine 30"*

Watercolor on paper

28 × 28 in

\$2,800 plus \$300 frame



PHILIPPE CHENG

*Untitled, 2002*

Chromogenic print mounted on aluminum with UV Ultra non-glare plexiglass

48 x 48 in. | Edition of 10

\$12,500





PHILIPPE CHENG

*Untitled, 2002*

Chromogenic print mounted on aluminum with UV Ultra non-glare plexiglass

30 x 30 in. | Edition of 10

\$7,000



JANET JENNINGS  
*Alewife Pond IV*, 2017  
Watercolor on arches paper  
30 x 22 in.  
\$1,500 plus \$300 frame



JANET JENNINGS

*Dream Wave*, 2018

Oil on canvas

48 x 60 in.

\$12,000



SCOTT BLUEDORN

*Moran's Turtle*, 2017

Archival digital giclee print

36 x 36 in. | Edition of 100

\$750, including frame



SCOTT BLUEDORN  
*Great Wave*, 2017  
Archival digital giclee print  
Edition of 50  
16 x 20 in.  
\$350, including frame



GEOFFREY REINHARD

*Stars n' Stripes Under the Stars (Sagaponack, NY)*

Archival pigment print

27 x 39 in. | Edition of 15

\$5,000 including frame



GEOFFREY REINHARD  
*Sea Legs, II* ( Napeague, NY)  
Archival pigment print  
29 3/16 x 41 in. | Edition of 15  
\$5,000 including frame



SANDI HABER FIFIELD  
*Montauk Blue*, 2011

Archival pigment print on HP Satin paper  
mounted to Sintra

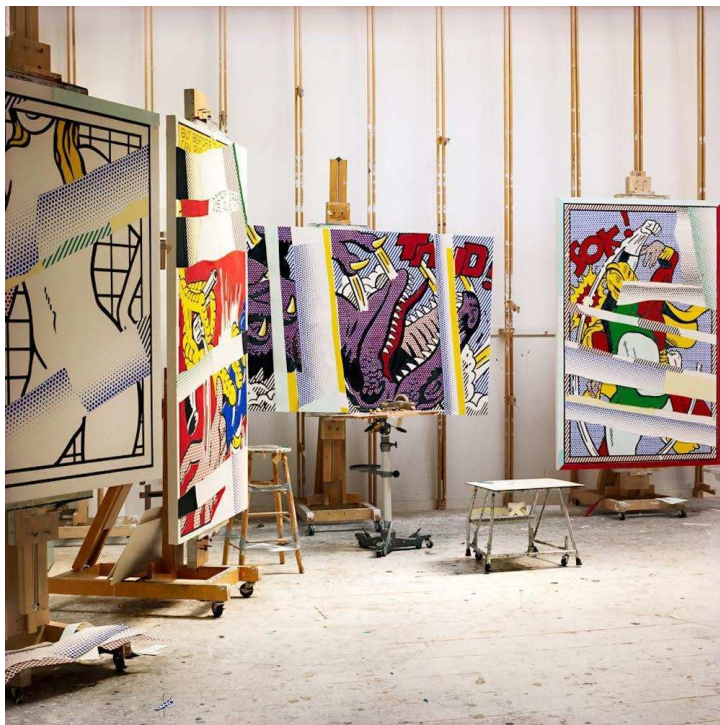
24 x 38 in. | Edition of 8  
\$5,500 + \$500 frame





SANDI HABER FIFIELD  
*Queen Anne's Lace and Parked Truck, Kerbyville,  
Oregon, 2010*

Archival inkjet print mounted to dibond  
24 x 20 in. | Edition of 10  
\$3,800 + \$400 frame



LAURIE LAMBRECHT  
*Four Reflections on Easels*, 1990  
Archival pigment print  
24 x 24 in. | Edition 2 of 12  
\$4,800 plus \$200 frame





CAIO FONSECA  
*Pietrasanta P13.69, 2013*  
Gouache on paper  
14 x 14 in.  
\$18,000, including frame



CAIO FONSECA  
*Pietrasanta P13.74*, 2013  
Gouache on paper  
14 x 14 in.  
\$18,000, including frame



PETER DAYTON  
*Dewey Weber #0 "Untitled"*, 2008  
Acrylic and resin on wood  
22 x 14 in.  
\$5,000

For more information, please visit gallery website  
[arcfineartllc.com](http://arcfineartllc.com)  
or contact Adrienne Ruger Conzelman at  
[arcfineart@me.com](mailto:arcfineart@me.com)







