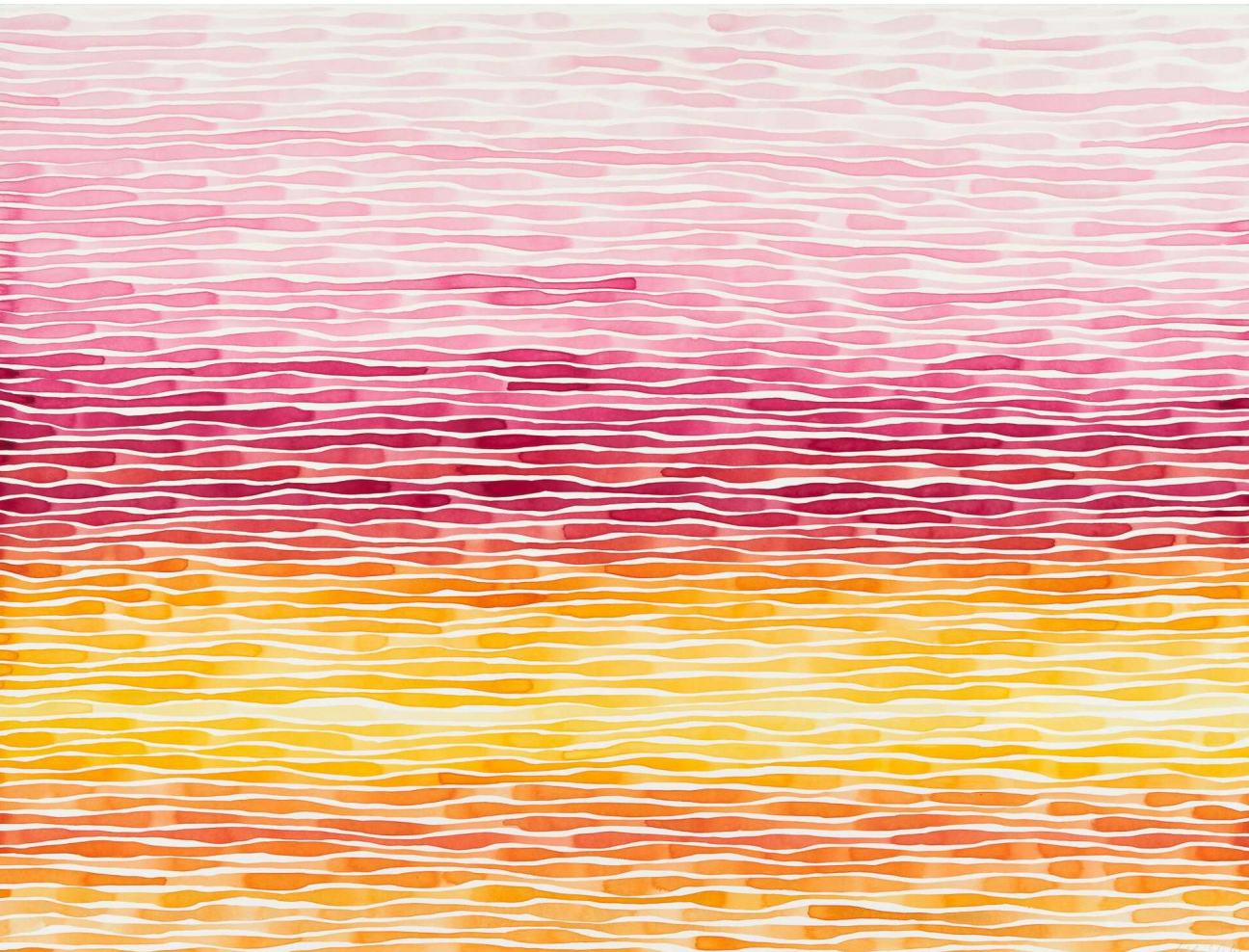


IDOLINE DUKE

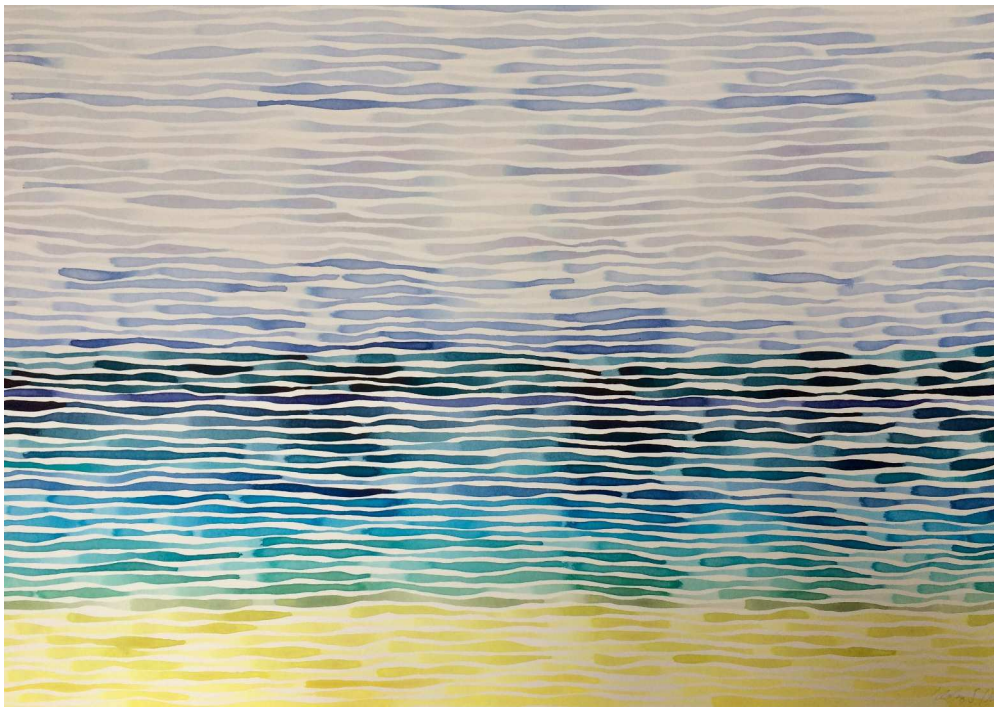


IDOLINE DUKE

The trick with watercolor — as with life — is knowing when to take control, and when to let go. The medium has a mind of its own, it needs to be allowed to wander, bloom, do its magic on the paper. In that sense, some of the most interesting parts of my paintings I didn't create.



Evening Lines (Summer), watercolor on paper, 30 x 40 in.



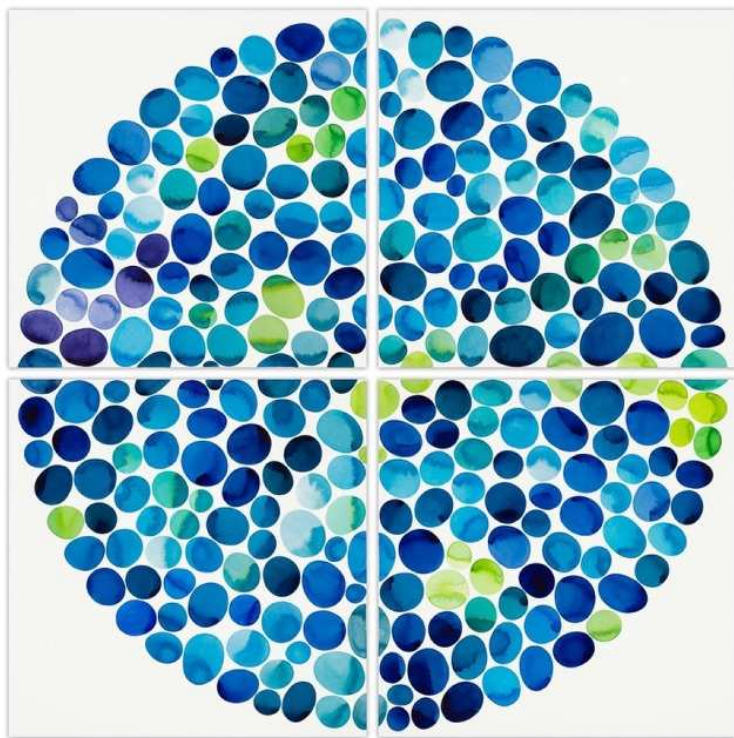
Atlantic Lines 6.18, watercolor on paper, 42 x 50 in.



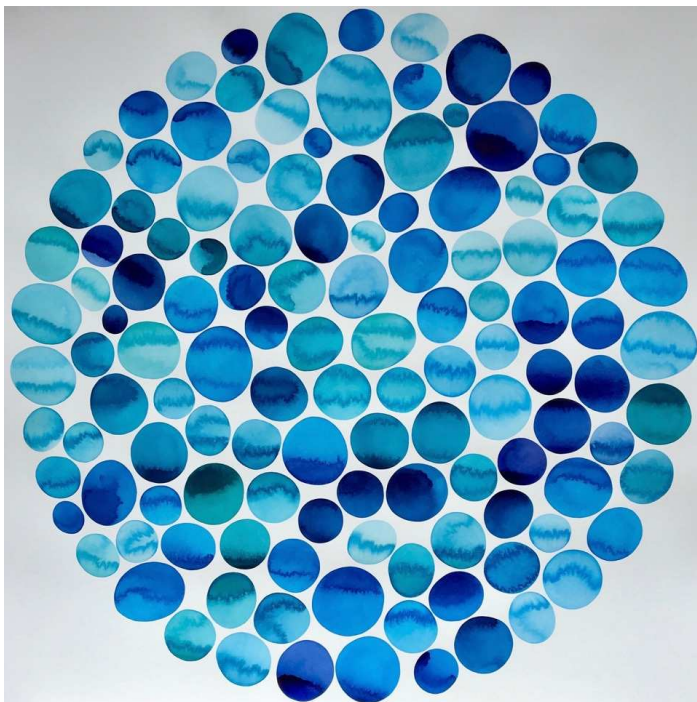
Big Pink Grid, watercolor on paper, 42 x 30 in.



Big Blue Grid II, watercolor on paper, 42 x 30 in.



Big Blue Pools Quadrant, watercolor on paper, 60 x 60 in.



Blue Pools 50, watercolor on paper, 50 x 50 in.



Green Pools, watercolor on paper, 25 x 25 in.



Dreaming Summer Blue, watercolor on paper, 30 x 30 in.



Big Chartreuse Flower, watercolor/ink on paper, 34 x 34 in.



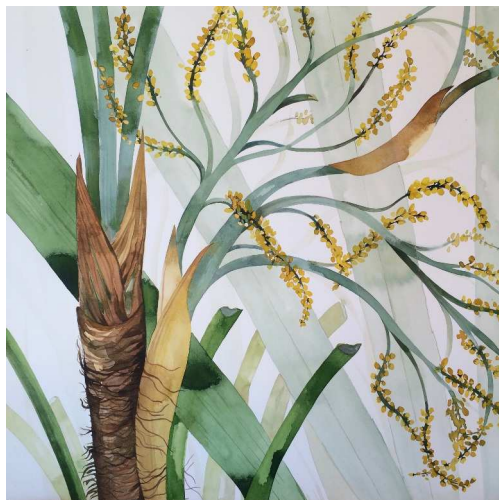
Big Green Flower II, watercolor/ink on paper, 36 x 36 in.



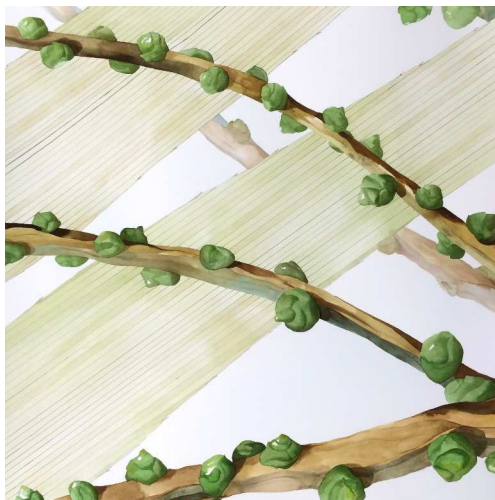
Big Summer Orange, watercolor on paper, 30 x 30 in.



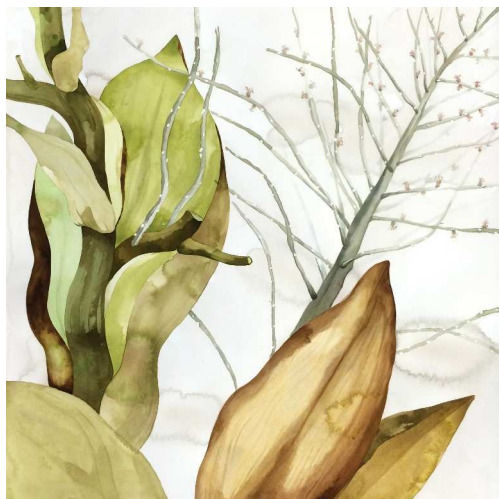
Big Palm II, watercolor on paper, 72 x 36 in.



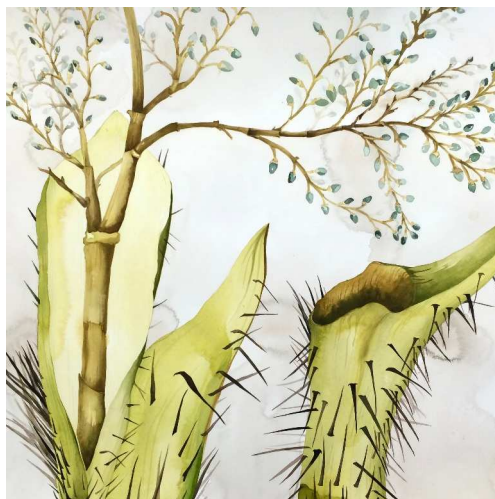
Palm Detail I, watercolor on paper, 30 x 30 in.



Palm Detail II, watercolor on paper, 30 x 30 in.



Palm Detail III, watercolor on paper, 30 x 30 in.



Palm Detail IV, watercolor on paper, 30 x 30 in.



Little Papaya, watercolor on paper, 43 x 30 in.



Big Tropical Leaf I, watercolor on paper, 52 x 52 in.



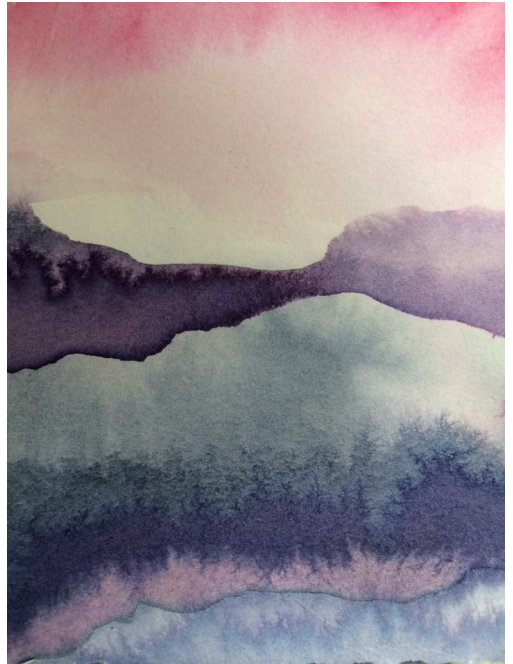
Pink Slice, watercolor on paper, 8 x 15 in.



Day Off, mixed media on panel,
11 x 9 in.



Harbor Dream I, watercolor, 9 x 7 in.



Harbor Dream II, watercolor, 4 x 3 in



Big Blue Strata, watercolor on paper, 41 x 30 in.



Green Strata II, watercolor on paper, 41 x 30 in.



Blue Strata Square, watercolor on paper, 30 x 30 in.



Water is Life- Portal Series, watercolor on paper, 34 x 34 in.



Summer Flurry Diptych, watercolor on paper, 44 x 60 in.



Pink Bush II, mixed media on paper, 38 x 50 in.



Big Orange Coral II, watercolor on paper, 36 x 47 in.



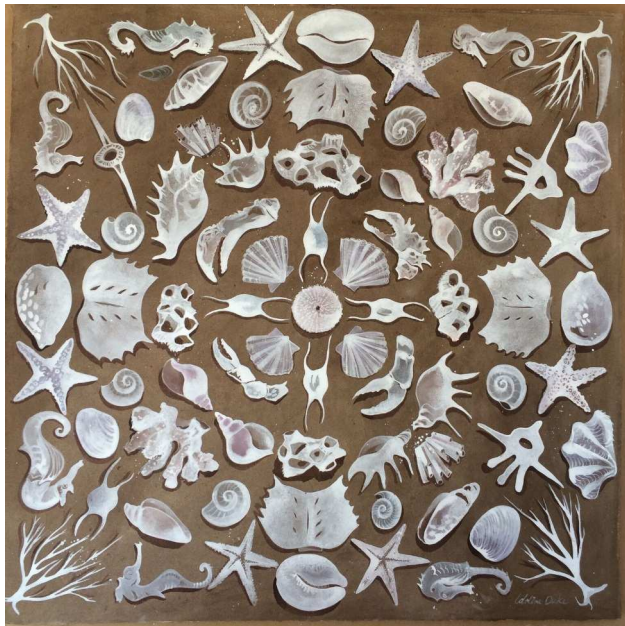
Big Red Coral, watercolor on paper, 32 x 32 in.



Silky Kelp, watercolor on paper, 32 x 32 in.



Big Begonia Leaf, watercolor on paper, 35 x 30 in.



Beachcomber's Valentine 30", watercolor on paper, 28 x 28 in.



Summer Cosmos, watercolor on paper, 41 x 30 in.



Blue Heron II, watercolor on paper, 41 x 30 in.



Purple Crab, watercolor on paper, 30 x 41 in.



Blue Lobster, watercolor on paper, 9 in. oval



Speckled Crab, watercolor on paper, 9 in. oval



Spider Crab II, watercolor, 9 in. oval



Orange Crab, watercolor on paper, 9 in. oval

IDOLINE DUKE

EDUCATION

- 1983 BA in Art History, Studio Art, University of Vermont
1983 Inchbald School of Design, London, England Landscape Design Certificate

EXHIBITIONS

- 2018 *East Hampton Antiques Show*, East Hampton, NY
Selections from ARC Fine Art, Finley's Fiction, Shelter Island, NY
Fragile, West Branch Gallery, Stowe, VT
- 2017 *Eyes of the East End*, ARC Fine Art
SCOPE Art Fair, HAVOC Gallery, New York, NY
- 2015 *East End Collected*, Southampton Arts Center, Southampton, NY
Endless Beginnings, Non-representational Art Today, West Branch Gallery, Stowe, VT
- 2014 *Floral Seductions*, Chandler Center for the Arts, Randolph, VT
- 2013 *I Dream of Summer*, ARC Fine Art LLC, Fairfield, CT
- 2012 *Highlights for the Winter*, ARC Fine Art, Fairfield, CT
Art Hamptons Art Fair, Bridgehampton, NY
Affordable Art Fair, New York, NY
In Our Nature, Eriksson Fine Art, Stowe, VT
Idoline Duke and Gowri Savor, Helen Day Art Center, Stowe, VT
- 2011 *Summer Selections*, ARC Fine Art, Fairfield, CT
- 2010 *Winter Selection of New Work*, ARC Fine Art, Fairfield, CT
Vermont Watercolor Society Juried Exhibition, Helen Day Art Center, Stowe, VT
Mecox Garden's Summer Artists Show and Sale, East Hampton, NY

- 2009 Idoline Duke Studio Exhibit and Sale, Stowe, VT
- 2007 Art Resource Association Juried Exhibition, TJ Wood Gallery, Vermont College, Montpelier, VT

ART RELATED WORK EXPERIENCE

- 2009- Freelance Curator: Eriksson Fine Art, Stowe, VT; Helen Day Art Center, Stowe, VT; Ashawagh Hall, The
2016 Springs, NY; and National Museum for Women in the Art Vermont Committee
- 2006- Exhibitions Director, Helen Day Art Center, Stowe, VT
2009
- 1985- Owner, Idoline Duke Garden Design, East Hampton, NY, Santa Fe, NM, Charleston, SC and Stowe, VT
2003

RESIDENCIES

- 2016 Vermont Studio Center, Vermont Artists Week
- 2014 Vermont Studio Center, Vermont Artists Week
- 2012 Vermont Studio Center, Vermont Artists Week
- 2010 Vermont Studio Center, Vermont Artists Week

for more information contact:

ARC Fine Art LLC

www.arcfineartllc.com

arcfineart@me.com

203 895 9595

on the cover: *Evening Lines (Summer)*, watercolor on paper, 30 x 40 in.

