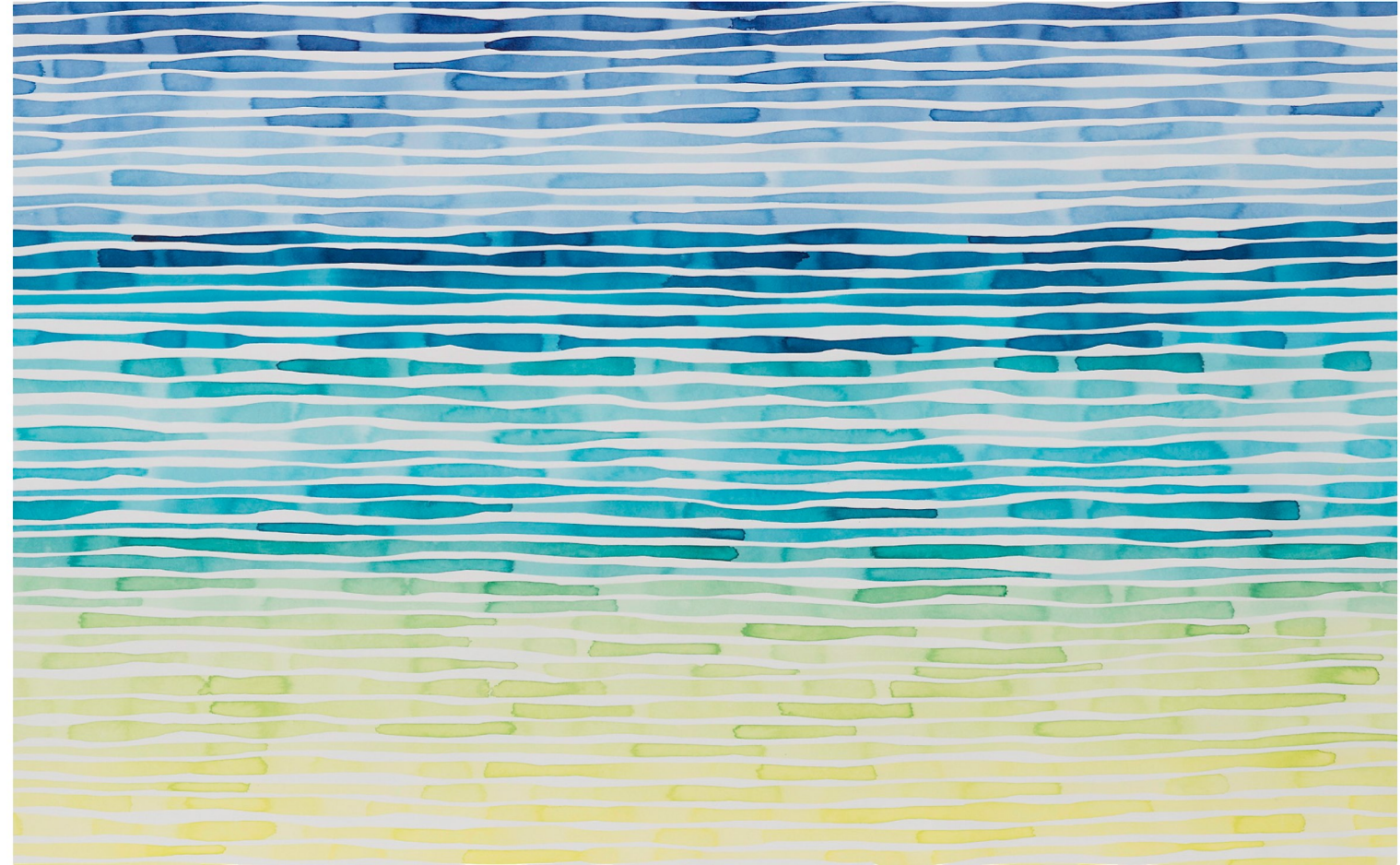


IDOLINE DUKE  
*I DREAM OF SUMMER*

A·R·C  
FINE ART LLC



IDOLINE DUKE  
*I DREAM OF SUMMER*

APRIL 4 - MAY 3, 2013

A·R·C  
FINE ART LLC



Living in northern Vermont requires enduring five full months of winter. While I have a deep appreciation for the subdued palette and relative calm of winter, I often starve for the warmth and abundance of summer. I get out to the mountains and into the snow everyday seeking sunshine and fun and thankfully, I have my studio to retreat to where I dream of summer.

I rely on my big brushes, large sheets of stark white paper and vibrant watercolors to fire my imagination with rich ideas and images. My favorite flowers blossom, ferns unfold, water swirls and settles and harsh sunlight fades. Summer is not far away...if I just keep working!

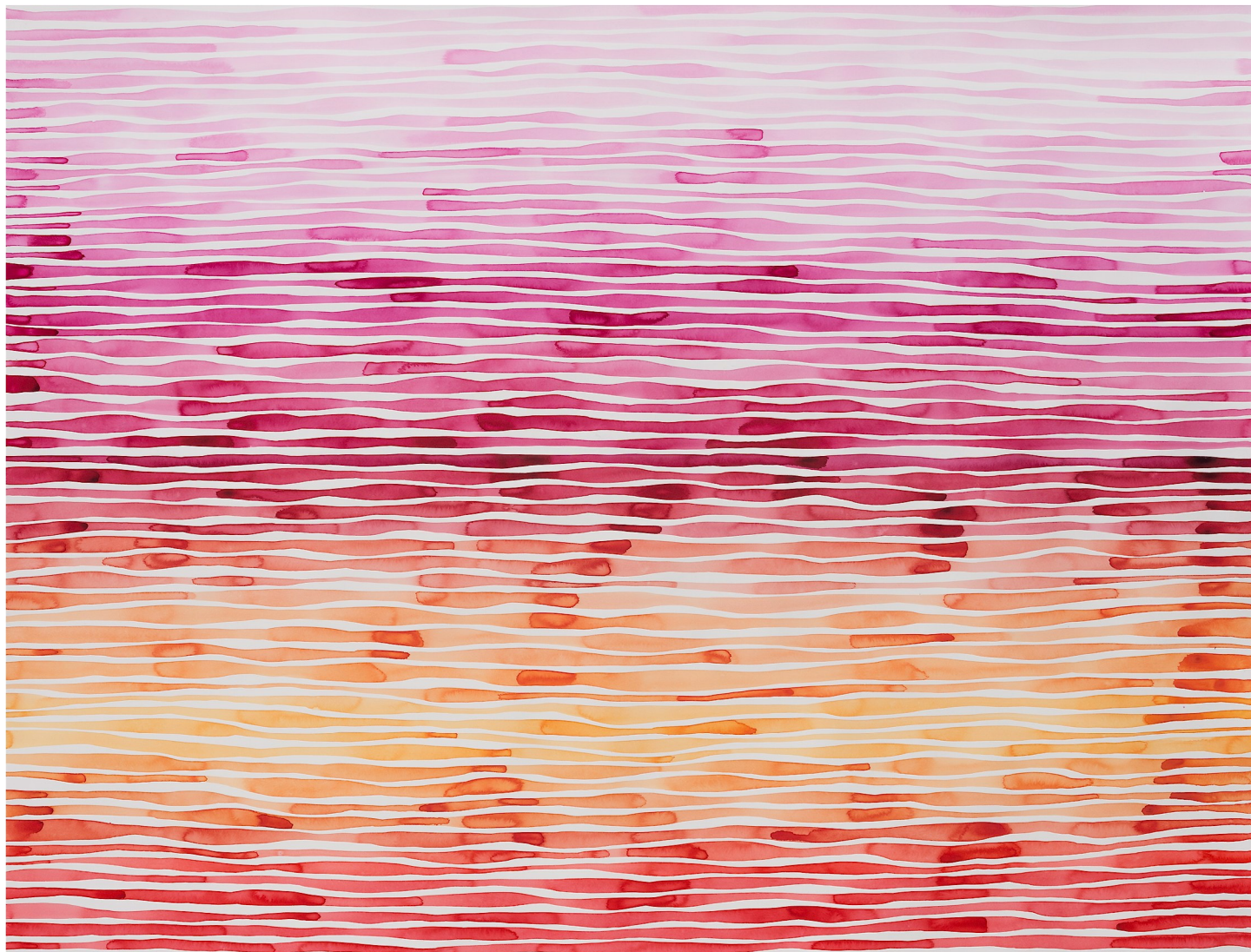
I draw on memories and desires, a deep respect for nature and a lifetime of summers near the ocean, where my heart and soul are most at home.

My work is a personal meditation and it is meant to be contemplative for the viewer as well. Our lives are full of enough stress and agitation. If my art succeeds, it evokes what's good in the world and creates a sense of well being and calm.

-Idoline Duke

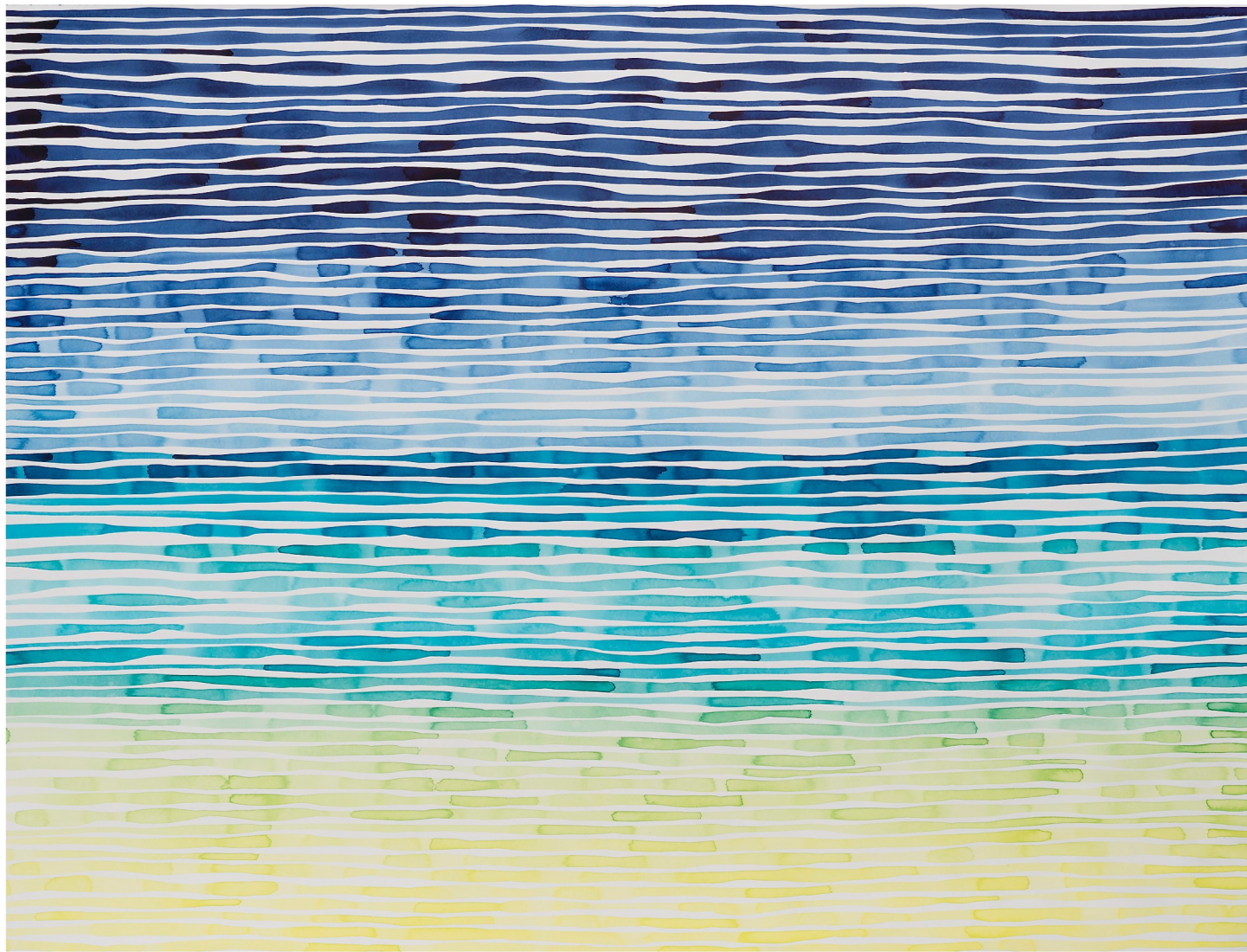


*Evening Lines*, 2013, watercolor on paper, 38 x 50 in.



*Atlantic Lines*, 2013, watercolor on paper, 38 x 50 in.





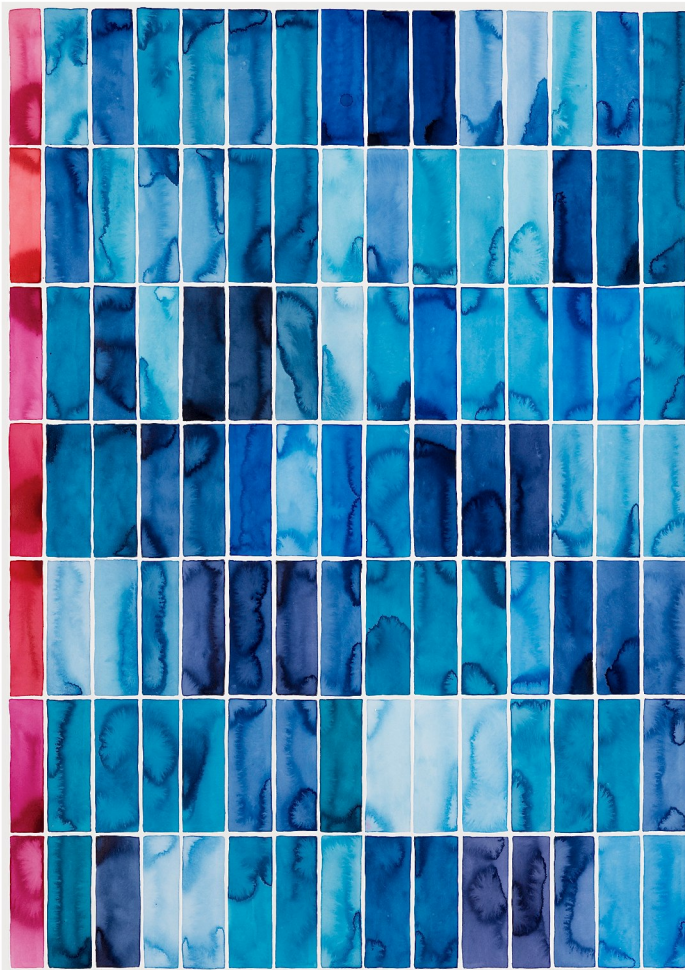


*Abstract Seafan*, 2011, mixed media on paper, 30 x 30 in.

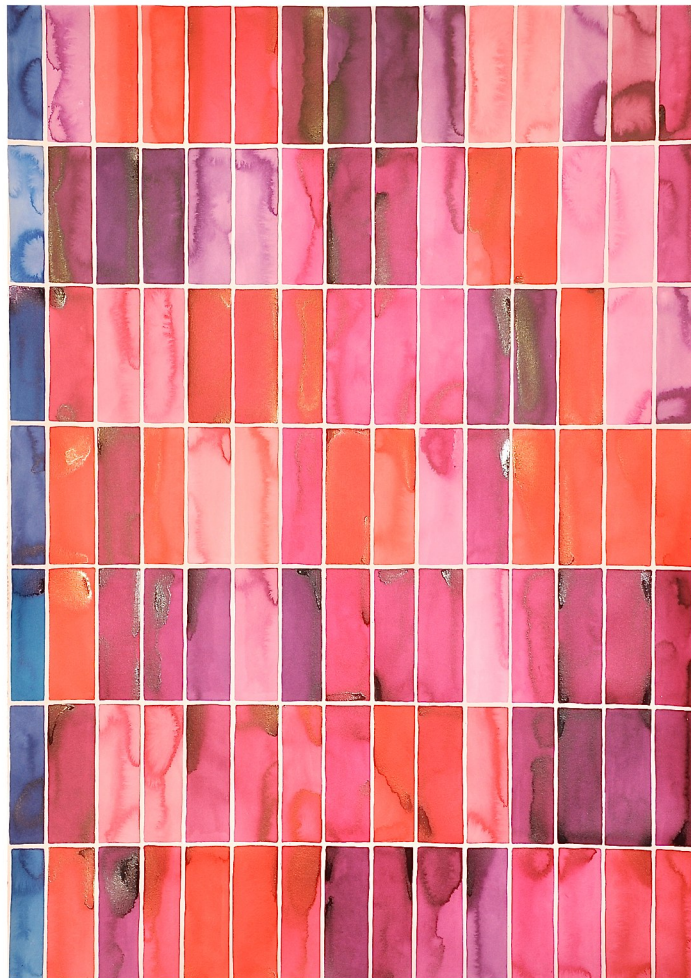




*Abstract Purple Seafan*, 2011, mixed media on paper, 30 x 30 in.



*Big Blue Grid*, 2012, watercolor on paper, 44 x 29 in.



*Big Pink Grid*, 2012, watercolor on paper, 44 x 29 in.



*Big Pink Flower*, 2013, watercolor on paper, 44 x 44 in.





*Big Dark Orange Flower I*, 2013, watercolor and india ink on paper, 30 x 30 in.





*Big Dark Blue Flower*, 2013, watercolor and india ink on paper, 30 x 30 in.

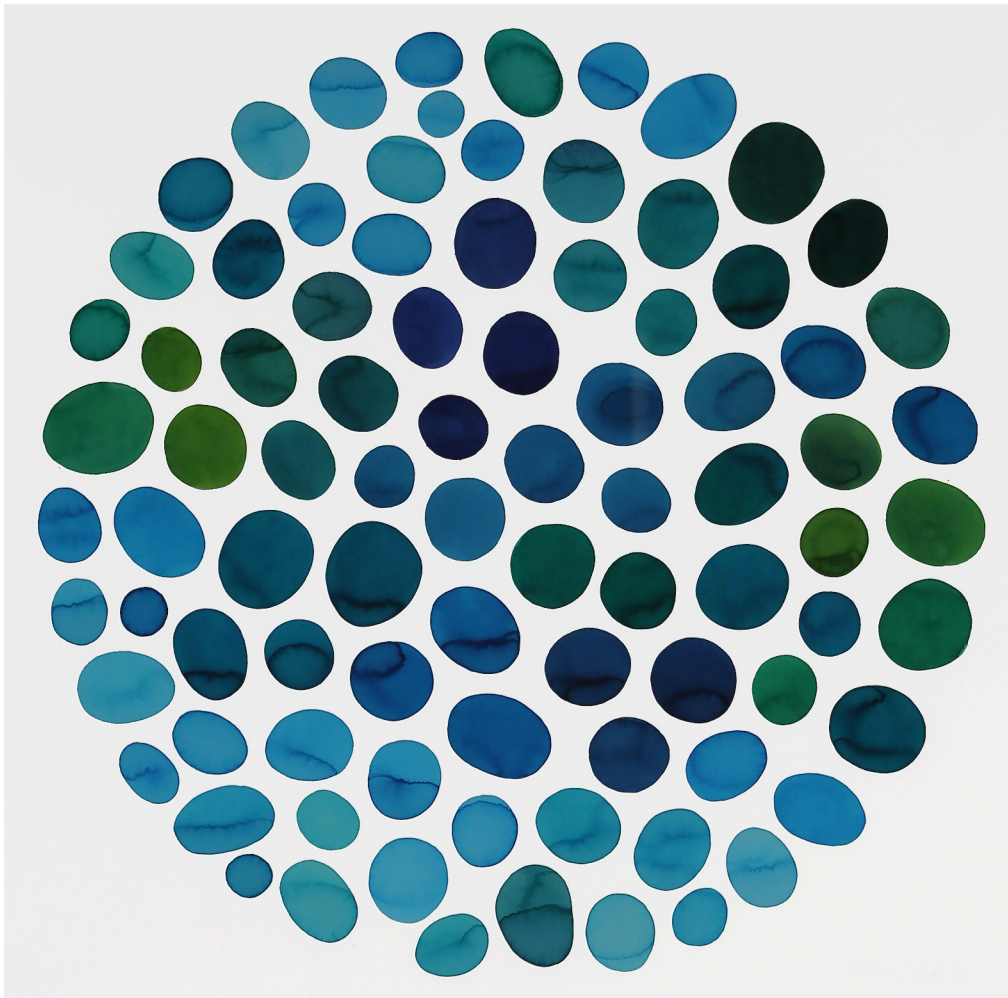
*Big Pink Quadrant II*, 2013, watercolor on paper, 65 x 65 in.





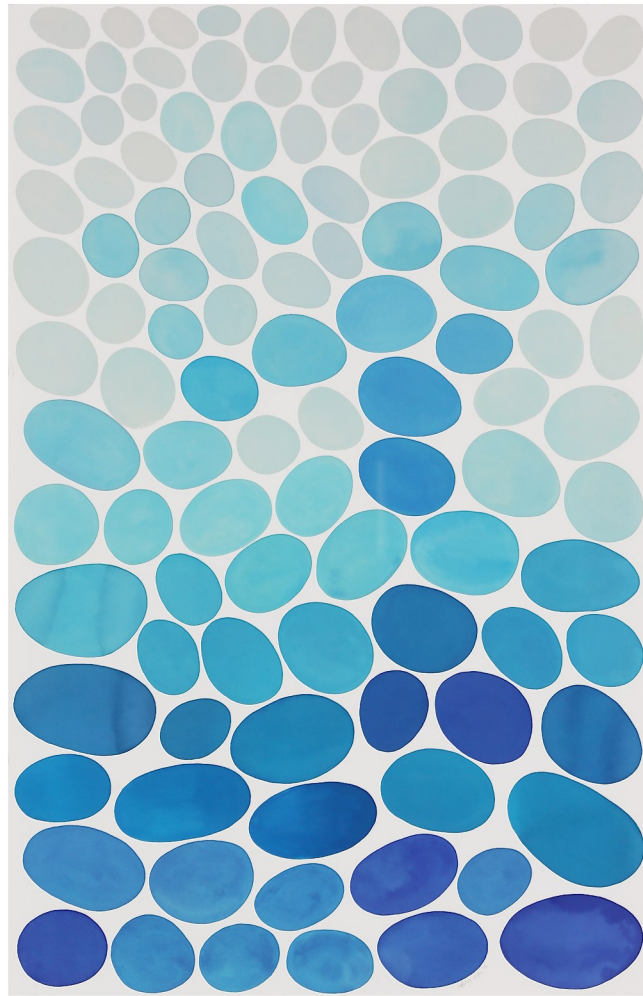


*Caribbean Pools*, 2013, watercolor on paper, 38 x 38 in.

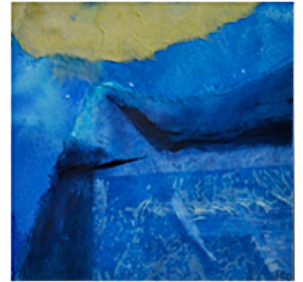


*Blue Pools*, 2012, watercolor on paper, 30 x 30 in.





*Pools Tank*, 2012, watercolor on paper, 40 x 26 in.



*Harbor I*, 2012, mixed media on paper, 8.5 × 9.5 in.  
*Harbor II*, *Harbor III*, 2012, mixed media on paper, 7.25 × 9.25 in.  
*Harbor IV*, 2012, mixed media on paper, 4.25 × 4.25 in.



*Splash I*, 2009, mixed media on paper, 3.25 x 5.5 in.  
*Splash II*, 2009, mixed media on paper, 3.25 x 4.5 in.



*Helen and Esme*, 2011, mixed media on paper, 3 x 4.25 in.

*Pink Dip Pair*, 2013, watercolor and acrylic on paper, 5.75 x 5.75 in. each



*Big Orange Coral*, 2012, watercolor and india ink on paper, 30 x 44 in.





*Big Brown Seaweed*, 2012, watercolor and india ink on paper, 36 x 50 in.



*Big Red Coral*, 2012, india ink and watercolor on paper, 32 x 32 in.





*Big Purple Seaweed*, 2012, watercolor on paper, 32 x 32 in.





*Big Brown Kelp*, 2012, watercolor and india ink on paper, 32 x 32 in.



## IDOLINE DUKE

born in New York, NY

BA Art History, Studio Art, University of Vermont, 1983

Inchbald School of Design, London, England

Landscape Design Certificate 1983

### EXHIBITIONS

- 2013 *I Dream of Summer*, ARC Fine Art, Fairfield, CT
- 2012-13 *Highlights for the Winter*, ARC Fine Art, LLC, Fairfield, CT
- 2012 Art Hamptons Art Fair, Bridgehampton, NY
- 2012 Affordable Art Fair, New York, NY
- 2012 *In Our Nature*, Eriksson Fine Art, Stowe, VT
- 2012 *Idoline Duke and Gowri Savoor*, Helen Day Art Center, Stowe, VT
- 2011 *Summer Selections*, ARC Fine Art, Fairfield, CT
- 2010 *Winter Selection of New Work*, ARC Fine Art, Fairfield, CT
- 2010 Vermont Watercolor Society Juried Exhibition, Helen Day Art Center, Stowe, VT
- 2010 Mecox Garden's Summer Artists Show and Sale, East Hampton, NY
- 2009 Idoline Duke Studio Exhibit and Sale, Stowe, Vermont
- 2007 Art Resource Association Juried Exhibition, TJ Wood Gallery, Vermont College, Montpelier, VT

### ART RELATED WORK EXPERIENCE

- 2009- Freelance Curator: Eriksson Fine Art, Stowe, VT; Helen Day Art Center, Stowe, VT; Ashawagh Hall,
- 2013 The Springs, NY; and National Museum for Women in the Arts, Vermont Committee
- 2006- Exhibitions Director, Helen Day Art Center, Stowe, VT
- 2009
- 1985- Owner, Idoline Duke Garden Design, East Hampton, NY, Santa Fe, NM, Charleston, SC, and Stowe, VT
- 2003

### RESIDENCIES

- 2012 Vermont Studio Center, Vermont Artists Week
- 2010 Vermont Studio Center, Vermont Artists Week



for more information contact:

ARC Fine Art LLC  
[www.arcfineartllc.com](http://www.arcfineartllc.com)  
[arcfineart@me.com](mailto:arcfineart@me.com)  
203 895 9595

on the cover: *Atlantic Lines*, 2013, watercolor on paper, 38 × 50 in.